

## 1130 (Sesquiterpene)

Name: Laurecomposin A

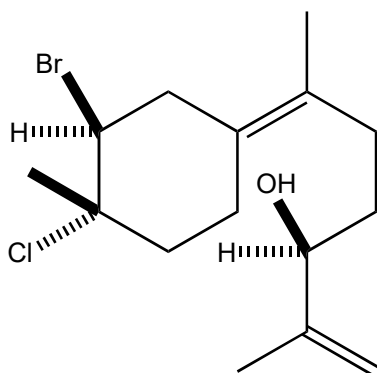
Origin: *Laurencia composita* (Zhanjiang coastline in the South China Sea, Guangdong Province, China)<sup>(1)</sup>;

Formula: C<sub>15</sub>H<sub>24</sub>BrClO

Mol. Wt.: 335.71

Opt. Rot.: [α]<sub>D</sub><sup>20</sup> +29 (CHCl<sub>3</sub>)

Mp: Oil



### References and Notes

(1) Hu, Z.-B., Yu, X.-Q., Wang, B., Liu, A.-H., Zhao, T.-S., Guo, Y.-W., Huang, H.-L., and Mao, S.-C. 2020. *Fitoterapia*, **146**, 104716. Structurally diverse halosesquiterpenoids from the red alga *Laurencia composita* Yamada. (IR, <sup>1</sup>H-NMR, <sup>13</sup>C-NMR, MS) (together with laurecomposin A, laurecomposin B, halonerolidol, compositacin L<sup>#</sup>(L), compositacin M, compositacin N, and 13 known sesquiterpenoids)