

1130# (Sesquiterpene)

Name: Laurecomposin B

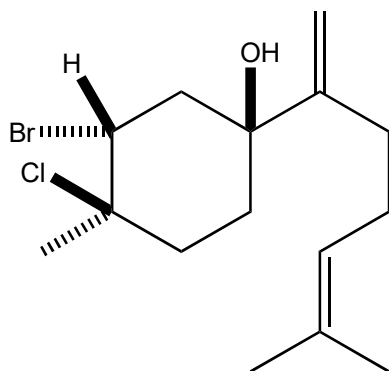
Origin: *Laurencia composita* (Zhanjiang coastline in the South China Sea, Guangdong Province, China)⁽¹⁾;

Formula: C₁₅H₂₄BrClO

Mol. Wt.: 335.71

Opt. Rot.: [α]_D²⁰ +54 (CHCl₃)

Mp: Oil



References and Notes

(1) Hu, Z.-B., Yu, X.-Q., Wang, B., Liu, A.-H., Zhao, T.-S., Guo, Y.-W., Huang, H.-L., and Mao, S.-C. 2020. Fitoterapia, **146**, 104716. Structurally diverse halosesquiterpenoids from the red alga *Laurencia composita* Yamada. (IR, ¹H-NMR, ¹³C-NMR, MS) (together with laurecomposin A, laurecomosin B, halonerolidol, compositacin L[#](L), compositacin M, compositacin N, and 13 known sesquiterpenoids)