

## 1215 (Sesquiterpene)

Name: (-)-Obtusane<sup>(1)</sup>; 3,10-Dibromo-2-chlorochamigr-7(14)-ene

{2,9-Dibromo-8-chloro-1,1,9-trimethyl-5-methylene-spiro[5.5]undecane}

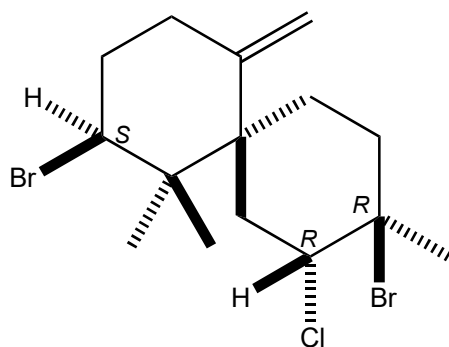
Origin: *Laurencia nipponica* (Akkeshi, Hokkaido, Japan)<sup>(1)</sup>;

Formula: C<sub>15</sub>H<sub>23</sub>Br<sub>2</sub>Cl

Mol. Wt.: 398.60

Opt. Rot.: [ $\alpha$ ]<sub>D</sub><sup>22</sup> -38.5 (CHCl<sub>3</sub>)

Mp.: 172-173



### References and Notes

(1) Furusaki, A., Matsumoto, T., Kurata, K., Suzuki, T., Suzuki, M., and Kurosawa, E. 1983. Bull. Chem. Soc. Jpn., **56**, 3501-3502. X-ray Structure determination of (-)-obtusane, a new sesquiterpene from the red alga, *Laurencia nipponica* Yamada.

(X-ray crystallographic analysis) (IR, <sup>1</sup>H-NMR, <sup>13</sup>C-NMR, MS)