

**1825** (Sesquiterpene)

Name: 1 $\beta$ -Bromo-6,8-cycloselin-4(15)-ene

(5-Bromo-1-isopropyl-5 $\alpha$ -methyl-2-methylene-decahydro-cyclopropa[*a*]indene)

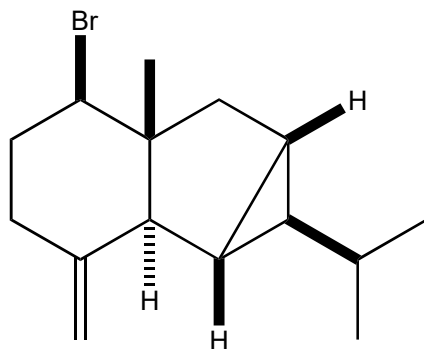
Origin: *Laurencia pinnata* (Nanji Island, China)<sup>(1)</sup>;

Formula: C<sub>15</sub>H<sub>23</sub>Br

Mol. Wt.: 283.25

Opt. Rot.:

Mp.: Colourless oil



**References and Notes**

(1) Ji, N.-Y., Li, X.-M., Ding, L.-P., and Wang, B.-G. 2016. *Biochem. Syst. Ecol.*, **64**, 1-5. Halogenated eudesmane derivatives and other terpenes from the marine red alga *Laurencia pinnata* and their chemotaxonomic significance. (<sup>1</sup>H-NMR, <sup>13</sup>C-NMR)  
(together with 1 $\beta$ -bromoselin-11-en-4 $\alpha$ -ol, 1 $\beta$ -bromo-4 $\alpha$ ,5 $\alpha$ -epoxyselinane, 1 $\beta$ -bromoselina-3,11-diene, [1 \$\beta\$ -bromo-6,8-cycloselin-4\(15\)-ene](#), 1 $\beta$ -bromoselin-4(15),11-diene, 2,10-dibromo-3-chlorochamigr-7-ene, 2,10-dibromo-3-chlorochamigr-7-en-9-ol, kahukuene B, 15-bromoparguer-9(11)-en-16-ol)