

2104 (Diterpene)

Name: Isoconcinndiol

{6-Bromo-1-(3-hydroxy-3-methyl-pent-4-enyl)-2,5,5,8a-tetramethyl-decahydro-naphthalen-2-ol}

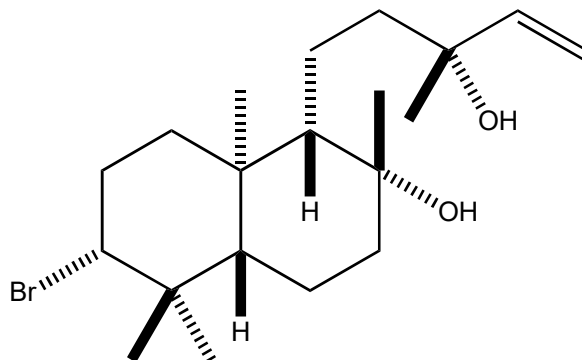
Origin: *Laurencia snyderae* var. *guadalupensis* (Guadalupe Island, Mexico)⁽¹⁾;

Formula: C₂₀H₃₅BrO₂

Mol. Wt.: 387.39

Opt. Rot.:

Mp.: 173-174 (from CHCl₃)



References and Notes

- (1) Howard, B. M. and Fenical, W. 1980. *Phytochemistry*, **19**, 2774-2776. Isoconcinndiol, a brominated diterpenoid from *Laurencia snyderae* var. *guadalupensis*. (IR, ¹H-NMR, ¹³C-NMR, MS)
- (2) *ent*-Isoconcinndiol; Ojika, M, Kigoshi, H., Yoshikawa, K., Nakayama, Y., and Yamada, K. 1992. *Bull. Chem. Soc. Jpn.*, **65**, 2300-2302. A new bromo diterpene, *epi*-aplysin-20, and *ent*-isoconcinndiol from the marine mollusc *Aplysia kurodai*. (Mp.: 171-172; [α]_D²⁶ -4.7 (CHCl₃))