

2105 (Diterpene)

Name: Pinnatol A

{6-Bromo-1-(3-hydroxy-3-methyl-pent-4-enyl)-
2,5,5,8a-tetramethyl-decahydro-naphthalen-2-ol}

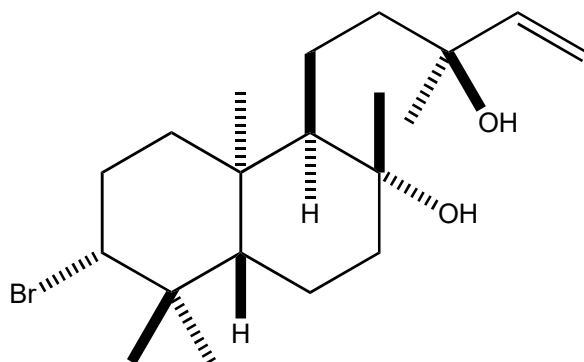
Origin: *Laurencia pinnata* (Onahama, Fukushima Prefecture, Japan)⁽¹⁾;

Formula: C₂₀H₃₅BrO₂

Mol. Wt.: 387.39

Opt. Rot.: [α]_D +24.5 (CHCl₃)

Mp.: 49-51



References and Notes

(1) Fukuzawa, A., Miyamoto, M., Kumagai, Y., Abiko, A., Takaya, Y., and Masamune, T. 1985. Chem. Lett., **14**, 1259-1262. Structures of new bromoditerpenes, pinnatols, from the marine red alga *Laurencia pinnata* Yamada. (IR, ¹H-NMR, ¹³C-NMR, MS) (together with [pinnatol A](#), pinnatols B~D, pinnaterpene C, pinnaterpene D, irieol C)