

2106 (Diterpene)

Name: Pinnatol B

{5-(6-Bromo-5,5,8a-trimethyl-2-methylene-decahydro-naphthalen-1-yl)-3-methyl-pent-1-en-3-ol}

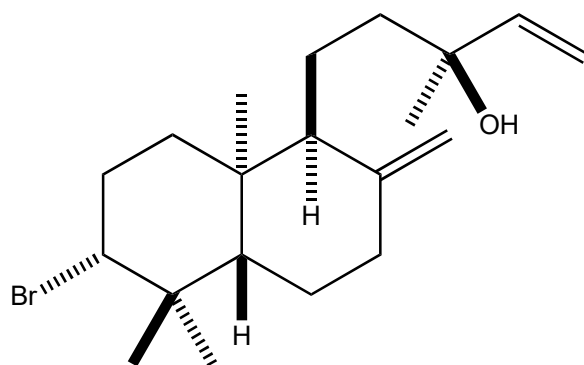
Origin: *Laurencia pinnata* (Onahama, Fukushima Prefecture, Japan)⁽¹⁾;

Formula: C₂₀H₃₃BrO

Mol. Wt.: 369.38

Opt. Rot.: [α]_D -7.6 (CHCl₃)

Mp.: 106.5-107.5



References and Notes

(1) Fukuzawa, A., Miyamoto, M., Kumagai, Y., Abiko, A., Takaya, Y., and Masamune, T. 1985. Chem. Lett., **14**, 1259-1262. Structures of new bromoditerpenes, pinnatols, from the marine red alga *Laurencia pinnata* Yamada. (¹H-NMR) (together with pinnatol A, [pinnatol B](#), pinnatols C~D, pinnaterpene C, pinnaterpene D, irieol C)