

## 2108 (Diterpene)

Name: Pinnatol C {5-(6-Bromo-2,5,5,8a-tetramethyl-1,4,4a,5,6,7,8,8a-octahydro-naphthalen-1-yl)-3-methyl-pent-1-en-3-ol}

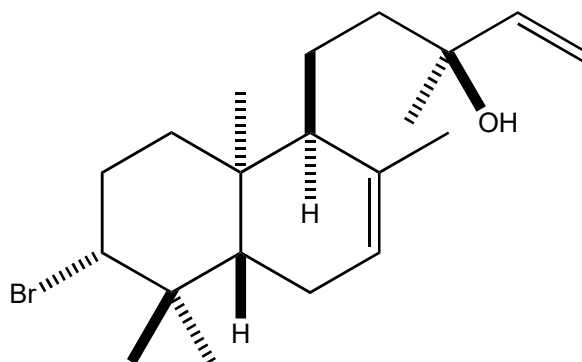
Origin: *Laurencia pinnata* (Onahama, Fukushima Prefecture, Japan)<sup>(1)</sup>;

Formula: C<sub>20</sub>H<sub>33</sub>BrO

Mol. Wt.: 369.38

Opt. Rot.: [α]<sub>D</sub> +110.5 (CHCl<sub>3</sub>)

Mp.: Oil



### References and Notes

(1) Fukuzawa, A., Miyamoto, M., Kumagai, Y., Abiko, A., Takaya, Y., and Masamune, T. 1985. Chem. Lett., **14**, 1259-1262. Structures of new bromoditerpenes, pinnatols, from the marine red alga *Laurencia pinnata* Yamada. (<sup>1</sup>H-NMR) (together with pinnatols A~B, [pinnatol C](#), pinnatol D, pinnaterpene C, pinnaterpene D, irieol C)