

2110 (Diterpene)

Name: *epi*-Aplysin-20 {6-Bromo-1-(5-hydroxy-3-methyl-pent-3-enyl)-2,5,5,8a-tetramethyl-decahydro-naphthalen-2-ol}

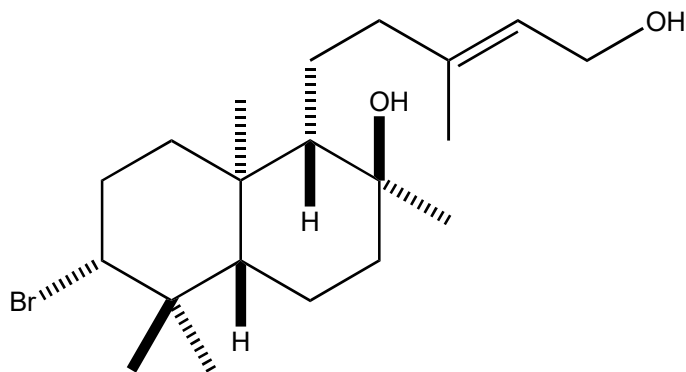
Origin: *Aplysia kurodai* (Azuri-hama, Shima Peninsula, Mie Prefecture, Japan)⁽¹⁾;

Formula: C₂₀H₃₅BrO₂

Mol. Wt.: 387.39

Opt. Rot.: [α]_D¹³ -0.69 (MeOH)

Mp.: 150-152



References and Notes

(1) **From the sea hare:** Ojika, M, Kigoshi, H., Yoshikawa, K., Nakayama, Y., and Yamada, K. 1992. Bull. Chem. Soc. Jpn., **65**, 2300-2302. A new bromo diterpene, *epi*-aplysin-20, and *ent*-isoconcinndiol from the marine mollusc *Aplysia kurodai*. (IR, ¹H-NMR, ¹³C-NMR, MS) (together with *epi*-aplysin-20, *ent*-isoconcinndiol)