

2111 (Diterpene)

Name: *ent*-Isoconcinndiol

{6-Bromo-1-(3-hydroxy-3-methyl-pent-4-enyl)-
2,5,5,8a-tetramethyl-decahydro-naphthalen-2-ol}

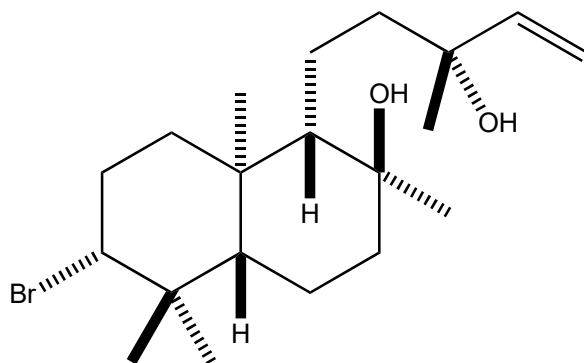
Origin: *Aplysia kurodai* (Azuri-hama, Shima Peninsula, Mie Prefecture, Japan)⁽¹⁾;

Formula: C₂₀H₃₅BrO₂

Mol. Wt.: 387.39

Opt. Rot.: [α]_D²⁶ -4.7 (CHCl₃)

Mp.: 171-172



References and Notes

(1) **From the sea hare:** Ojika, M, Kigoshi, H., Yoshikawa, K., Nakayama, Y., and Yamada, K. 1992. Bull. Chem. Soc. Jpn., **65**, 2300-2302. A new bromo diterpene, *epi*-aplysin-20, and *ent*-isoconcinndiol from the marine mollusc *Aplysia kurodai*. (together with *epi*-aplysin-20, [ent-concinndiol](#))