

2112 (Diterpene)

Name: (-)-Paniculatol

{8-Bromo-3,4a,7,7,10a-pentamethyl-3-vinyl-
dodecahydro-benzo[f]chromen-6-ol}

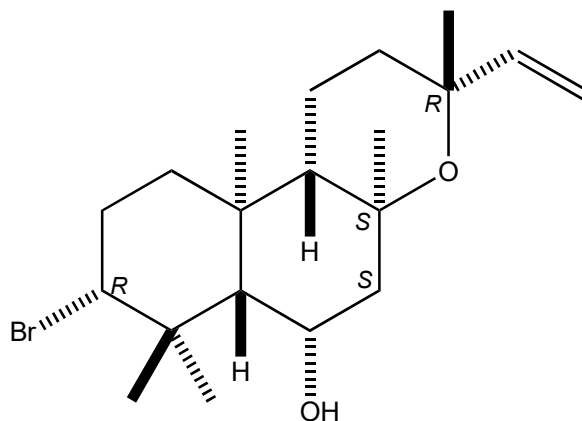
Origin: *Laurencia paniculata* (Al Wakrah Bay, 30 km south of Doha, Qatar)⁽¹⁾;

Formula: C₂₀H₃₃BrO₂

Mol. Wt.: 385.38

Opt. Rot.: [α]_D²⁶ -12 (CHCl₃)

Mp.: 172+/-1



References and Notes

- (1) Briand, A, Kornprobst, J.-M., Al-Easa, H. S., Rizk, A. F. M., and Toupet, L. 1997. *Tetrahedron Lett.*, **38**, 3399-3400. (-)-Paniculatol, a new *ent*-labdane bromoditerpene from *Laurencia paniculata*. (X-ray crystallographic analysis) (IR, ¹H-NMR, ¹³C-NMR)