

2113 (Diterpene)

Name: Bromolabdane-1

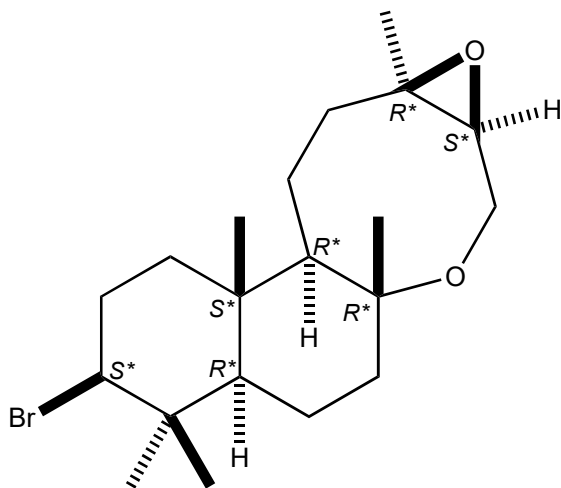
Origin: *Laurencia obtusa* (Mitikas Bay in the Ionean Sea, Greece)⁽¹⁾;

Formula: C₂₀H₃₃BrO₂

Mol. Wt.: 385.38

Opt. Rot.: [α]_D²⁰ +21.9 (CHCl₃)

Mp.: Oil



References and Notes

(1) Iliopoulou, D., Mihopoulos, N., Roussis, V., and Vagias, C. 2003. *J. Nat. Prod.*, **66**, 1225-1228.

New brominated labdane diterpenes from the red alga *Laurencia obtusa*. (IR, ¹H-NMR, ¹³C-NMR, MS)