

2114 (Diterpene)

Name: Bromolabdane-2

{9-Bromo-4-chloromethyl-3,5a,8,8,11a-pentamethyl-
tetradecahydro-naphtho[2,1-*b*]oxepin-3-ol}

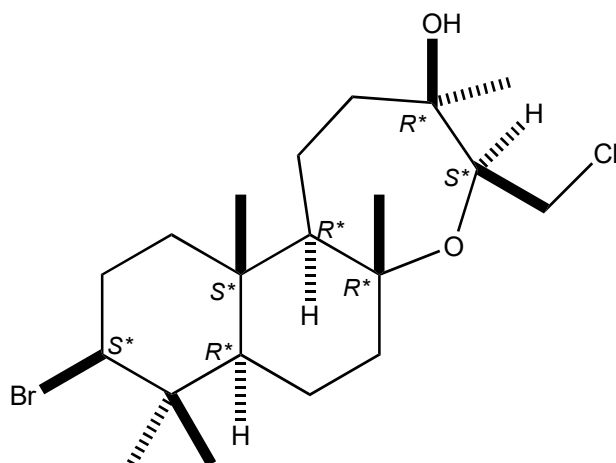
Origin: *Laurencia obtusa* (Mitikas Bay in the Ionean Sea, Greece)⁽¹⁾;

Formula: C₂₀H₃₄BrClO₂

Mol. Wt.: 421.84

Opt. Rot.: [α]_D²⁰ +6.2 (CHCl₃)

Mp.: Oil



References and Notes

(1) Iliopoulou, D., Mihopoulos, N., Roussis, V., and Vagias, C. 2003. *J. Nat. Prod.*, **66**, 1225-1228.

New brominated labdane diterpenes from the red alga *Laurencia obtusa*. (IR, ¹H-NMR, ¹³C-NMR, MS)