

2116 (Diterpene)

Name: Isoaplysin-20

{7-Bromo-1-hydroxymethyl-2,4b,8,8,10a-pentamethyl-tetradecahydro-phenanthren-2-ol}

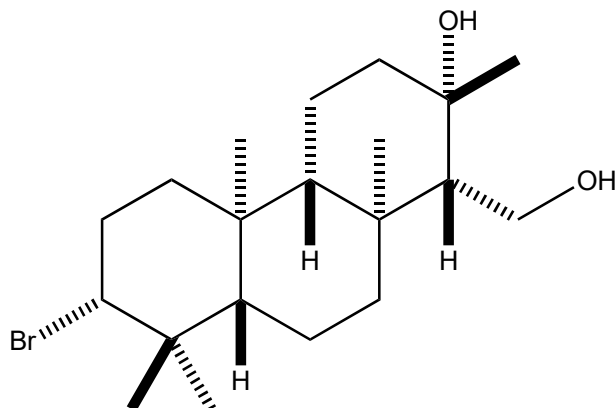
Origin: *Laurencia perforata* (Madeira and Corralejos, Fuerteventura, Canary Islands)⁽¹⁾;
Aplysia kurodai (Hokkaido, Japan)⁽²⁾;

Formula: C₂₀H₃₅BrO₂

Mol. Wt.: 387.39

Opt. Rot.:

Mp.: 197-199⁽¹⁾; 195-198⁽²⁾



References and Notes

- (1) Gonzalez, A. G., Ciccio, J. F., Rivera, A. P., and Martin, J. D. 1985. *J. Org. Chem.*, **50**, 1261-1264. New halogenated diterpenes from the red alga *Laurencia perforata*. (IR, ¹H-NMR, MS)
- (2) **From the sea hare:** Yamamura, S. and Terada, Y. 1977. *Tetrahedron Lett.*, **18**, 2171-2172. Isoaplysin-20, a natural bromine-containing diterpene, from *Aplysia kurodai*. (IR, ¹H-NMR, MS) (together with [isoaplysin-20](#), aplysin-20)