

2117 (Diterpene)

Name: 1-Acetoxy-3-bromo-6-hydroxy-8,13-epoxylabd-14-ene

{Acetic acid 8-bromo-6-hydroxy-3,4a,7,7,10a-pentamethyl-3-vinyl-dodecahydro-benzo[f]chromen-10-yl ester}

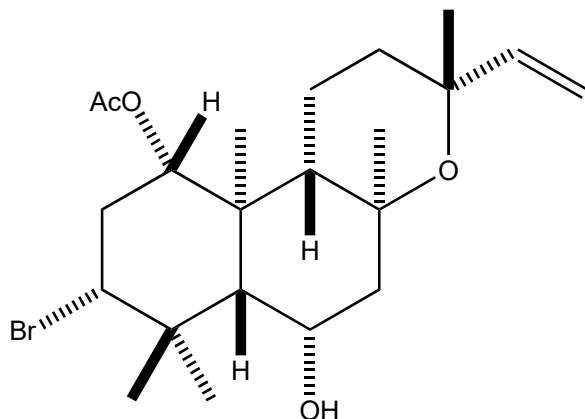
Origin: *Laurencia* sp. (Bisezaki, Motobu, Okinawa Prefecture, Japan)⁽¹⁾;

Formula: C₂₂H₃₅BrO₄

Mol. Wt.: 443.41

Opt. Rot.: [α]_D²⁴ +28.0 (CHCl₃)

Mp.: 183-184



References and Notes

- (1) Suzuki, M., Nakano, S., Takahashi, Y., Abe, T., Masuda, M., Takahashi, H., and Kobayashi, K. 2002. *J. Nat. Prod.*, **65**, 801-804. Brominated labdane-type diterpenoids from an Okinawan *Laurencia* sp. (X-ray crystallographic analysis) (IR, ¹H-NMR, ¹³C-NMR, MS)