

2118 (Diterpene)

Name: 3-Bromo-6-hydroxy-8,13-epoxylabd-14-en-1-one

{8-Bromo-6-hydroxy-3,4a,7,7,10a-pentamethyl-3-vinyl-decahydro-benzo[*f*]chromen-10-one}

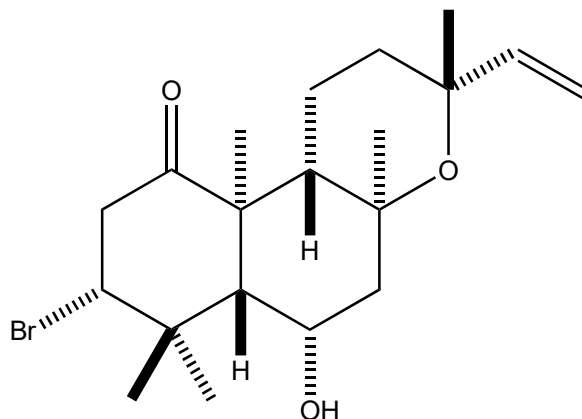
Origin: *Laurencia* sp. (Bisezaki, Motobu, Okinawa Prefecture, Japan)⁽¹⁾;

Formula: C₂₀H₃₁BrO₃

Mol. Wt.: 399.36

Opt. Rot.: [α]_D²⁴ -120 (CHCl₃)

Mp.: 213-214



References and Notes

- (1) Suzuki, M., Nakano, S., Takahashi, Y., Abe, T., Masuda, M., Takahashi, H., and Kobayashi, K. 2002. *J. Nat. Prod.*, **65**, 801-804. Brominated labdane-type diterpenoids from an Okinawan *Laurencia* sp. (X-ray crystallographic analysis) (IR, ¹H-NMR, ¹³C-NMR, MS)