

2119 (Diterpene)

Name: *ent*-13-Epiconcinndiol

{6-Bromo-1-(3-hydroxy-3-methyl-pent-4-enyl)-2,5,5,8a-tetramethyl-decahydro-naphthalen-1-ol}

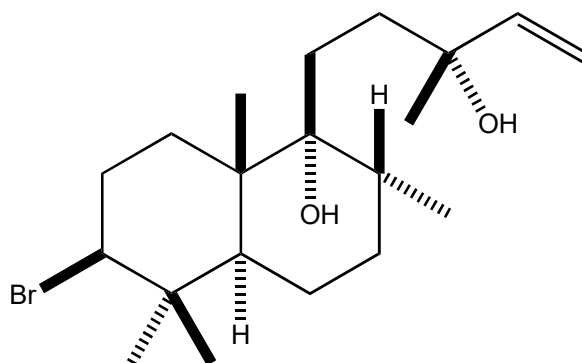
Origin: *Chondria tenuissima* (Sarkoy from the Marmara Sea, Turkey)⁽¹⁾;

Formula: C₂₀H₃₅BrO₂

Mol. Wt.: 387.39

Opt. Rot.: [α]_D²⁵ -17.34 (CHCl₃)

Mp.: 101.5-102.5



References and Notes

(1) Oztunc, A., Imre, S., Lotter, H., and Wagner, H. 1989. *Phytochemistry*, **28**, 3403-3404. *ent*-13-epiconcinndiol from the red alga *Chondria tenuissima* and its absolute configuration.

(X-ray crystallographic analysis) (IR, ¹H-NMR, ¹H-NMR, MS)

(2) Synthesis of (*dl*)-epiconcinndiol; Yamaguchi, Y., Uyehara, T., and Kato, T. 1985. *Tetrahedron Lett.*, **26**, 343-346. Biogenetic type synthesis of (*dl*)-concinndiol and (*dl*)-aplysin 20. (¹H-NMR)