

2735 (Diterpene)

Name: Dactylomelane-1

{5-[3-Bromo-2-(4-chloro-3-hydroxy-4-methyl-pentyl)-
2-methyl-6-methylene-cyclohexyl]-3-methyl-pent-1-en-3-ol}

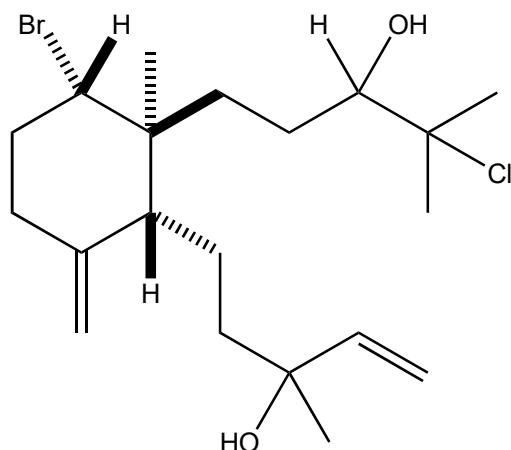
Origin: *Aplysia depilans* (Skylos Island, North Sporades complex of the Aegean Sea, Greece)⁽¹⁾;

Formula: C₂₀H₃₄BrClO₂

Mol. Wt.: 421.84

Opt. Rot.: [α]_D²⁰ +3.8 (CHCl₃)

Mp.: Oil



References and Notes

- (1) Petraki, A., Ioannou, E., Papazafiri, P., and Roussis, V. 2015. *J. Nat. Prod.*, **78**, 462-467.
Dactylomelane diterpenes from the sea hare *Aplysia depilans*. (UV, IR, ¹H-NMR, ¹³C-NMR)
(together with several dactylomelane diterpenes)