

2740 (Diterpene)

Name: Dactylomelane-6

{5-{3-Bromo-2-[2-(3,3-dimethyl-oxiranyl)-ethyl]-2-methyl-6-methylene-cyclohexyl}-3-methyl-pent-1-en-3-ol}

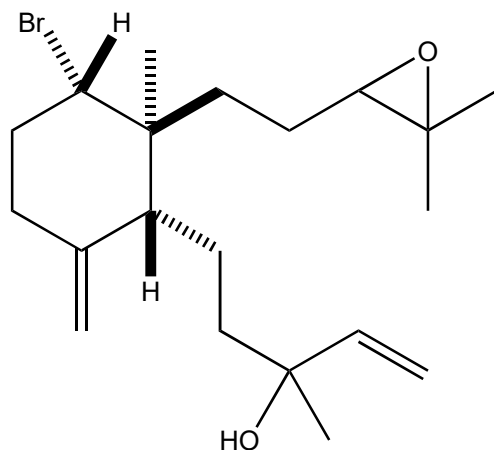
Origin: *Aplysia depilans* (Skylos Island, North Sporades complex of the Aegean Sea, Greece)⁽¹⁾;

Formula: C₂₀H₃₃BrO₂

Mol. Wt.: 385.38

Opt. Rot.: [α]_D²⁰ +21.0 (CHCl₃)

Mp.: Oil



References and Notes

(1) Petraki, A., Ioannou, E., Papazafiri, P., and Roussis, V. 2015. *J. Nat. Prod.*, **78**, 462-467.

Dactylomelane diterpenes from the sea hare *Aplysia depilans*. (UV, IR, ¹H-NMR, ¹³C-NMR) (together with several dactylomelane diterpenes)