

3106 (Triterpene)

Name: Magireol-A

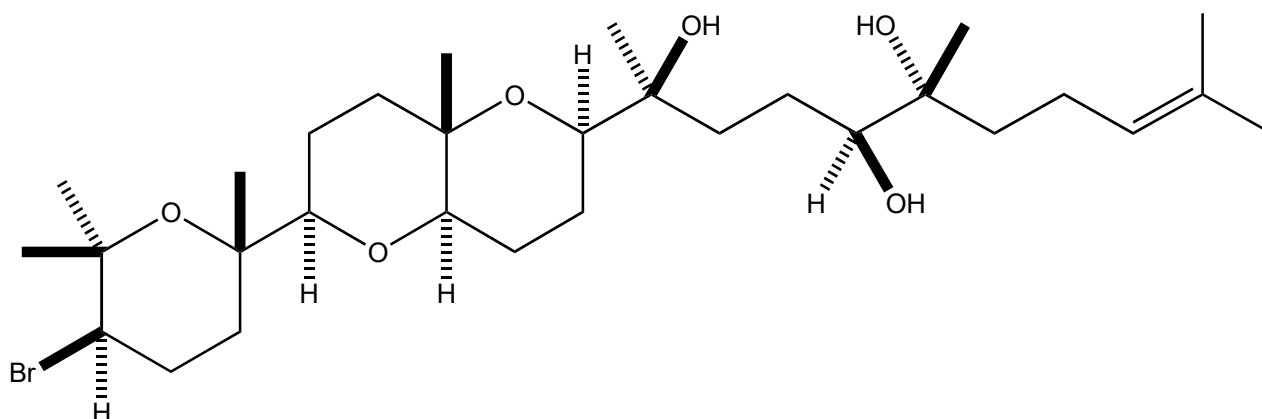
Origin: *Laurencia saitoi* (as *L. obtusa*⁽²⁾) (Teuri Island, Hokkaido, Japan)^(1,2);

Formula: C₃₀H₅₃BrO₆

Mol. Wt.: 589.64

Opt. Rot.: [α]_D 0 (CHCl₃); [α]₅₇₇ -7.0 (CHCl₃)

Mp.: 98.5-100



References and Notes

(1) Suzuki, T., Takeda, S., Suzuki, M., Kurosawa, E., Kato, A., and Imanaka, Y. 1987. Chem. Lett., **16**, 361-364. Cytotoxic squalene-derived polyethers from the marine red alga *Laurencia obtusa* (Hudson) Lamouroux. (IR, ¹H-NMR, ¹³C-NMR) (together with 15-anhydrothrsiferyl 18,23-diacetate, 15(28)-anhydrothrsiferyl 18,23-diacetate, [magireol A](#), magireol-B, magireol-C)

(2) *Laurencia saitoi* Perestenko was confused with *Laurencia obtusa* (Hudson) Lamouroux; Masuda, M. and Abe, T. 1993. Jpn. J. Phycol., **41**, 7-18. The occurrence of *Laurencia saitoi* Perestenko (*L. obtusa* auct. japon.) (Ceramiales, Rhodophyta) in Japan.