

3107 (Triterpene)

Name: Magireol-B

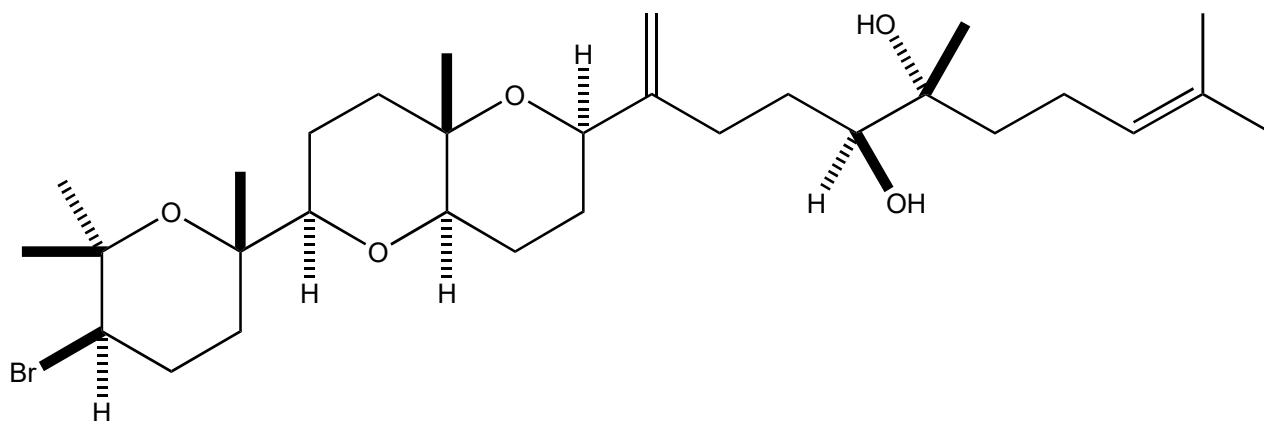
Origin: *Laurencia saitoi* (as *L. obtusa*⁽²⁾) (Teuri Island, Hokkaido, Japan)^(1,2);

Formula: C₃₀H₅₁BrO₅

Mol. Wt.: 571.63

Opt. Rot.: [α]_D +7.8 (CHCl₃)

Mp.: 64.5-66



References and Notes

(1) Suzuki, T., Takeda, S., Suzuki, M., Kurosawa, E., Kato, A., and Imanaka, Y. 1987. Chem. Lett., **16**, 361-364. Cytotoxic squalene-derived polyethers from the marine red alga *Laurencia obtusa* (Hudson) Lamouroux. (IR, ¹H-NMR, ¹³C-NMR) (together with 15-anhydrothrsiferyl 18,23-diacetate, 15(28)-anhydrothrsiferyl 18,23-diacetate, magireol-A, [magireol-B](#), magireol-C)

(2) *Laurencia saitoi* Perestenko was confused with *Laurencia obtusa* (Hudson) Lamouroux; Masuda, M. and Abe, T. 1993. Jpn. J. Phycol., **41**, 7-18. The occurrence of *Laurencia saitoi* Perestenko (*L. obtusa* auct. japon.) (Ceramiales, Rhodophyta) in Japan.