

## 3116 (Triterpene)

Name: 10-Epi-15,16-dehydrothysiferol

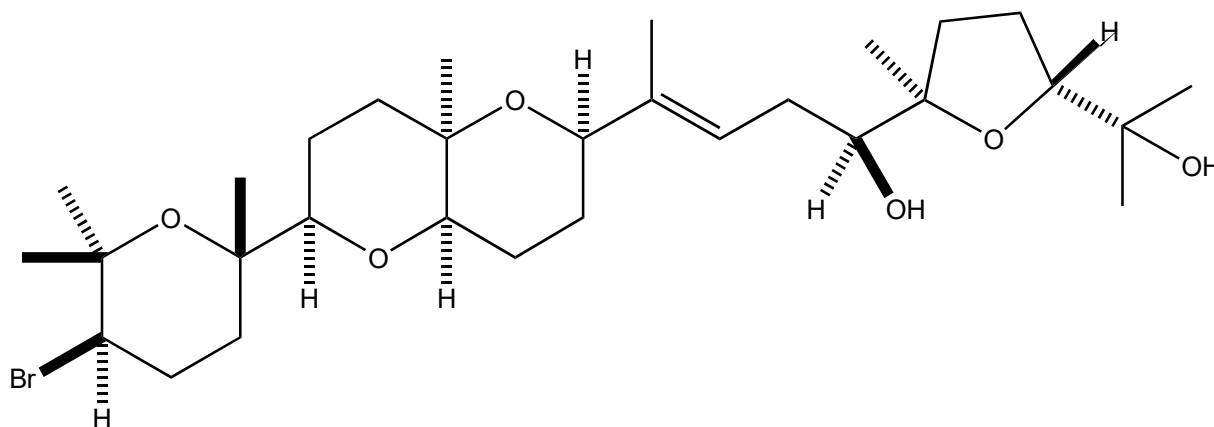
Origin: *Laurencia viridis* (Callao Salvaje, Paraiso Flororal, El Palmar, South Tenerife, Canary Islands, Spain)<sup>(1)</sup>;

Formula: C<sub>30</sub>H<sub>51</sub>BrO<sub>6</sub>

Mol. Wt.: 587.63

Opt. Rot.: [α]<sub>D</sub><sup>25</sup> +8.0 (CHCl<sub>3</sub>)

Mp.: Amorphous solid



### References and Notes

(1) Norte, M., Fernandez, J. J., and Souto, M. L. 1997. *Tetrahedron*, **53**, 4649-4654. New polyether squalene derivatives from *Laurencia*. (IR, <sup>1</sup>H-NMR, <sup>13</sup>C-NMR, MS) (together with several polyether triterpenes)