

## 3119 (Triterpene)

Name: 16-Epihydroxydehydrothysiferol

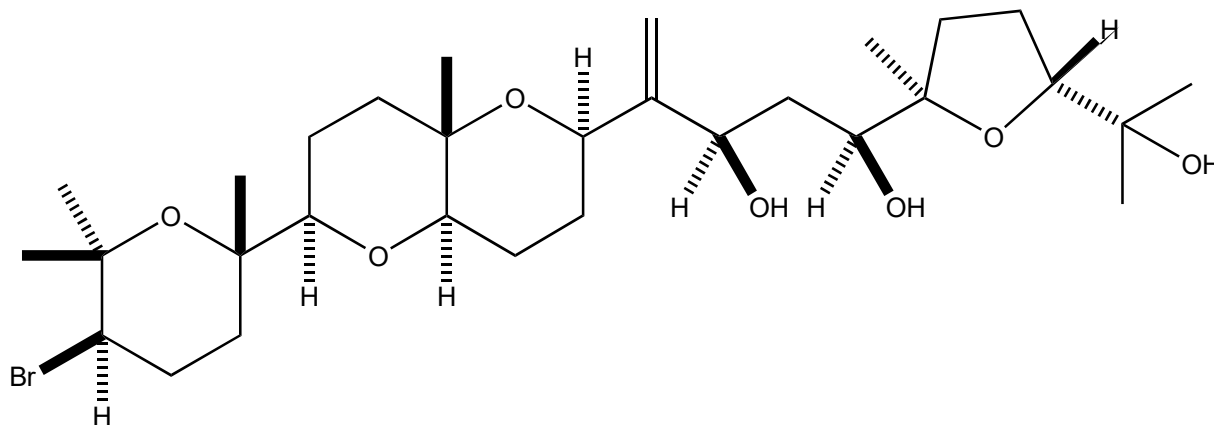
Origin: *Laurencia viridis* (Callao Salvaje, Paraiso Flororal, El Palmar, South Tenerife, Canary Islands, Spain)<sup>(1)</sup>;

Formula: C<sub>30</sub>H<sub>51</sub>BrO<sub>7</sub>

Mol. Wt.: 603.63

Opt. Rot.: [ $\alpha$ ]<sub>D</sub><sup>25</sup> +12 (CHCl<sub>3</sub>)

Mp.: Amorphous solid



### References and Notes

(1) Manríquez, C. P., Souto, M. L., Gavin, J. A., Norte, M., and Fernández, J. J.. 2001. *Tetrahedron*, **57**, 3117-3123. Several new squalene-derived triterpenes from *Laurencia*. (IR, <sup>1</sup>H-NMR, <sup>13</sup>C-NMR, MS) (together with several polyether triterpenes)