

## 3201# (Triterpene)

Name: Enshuol epoxide

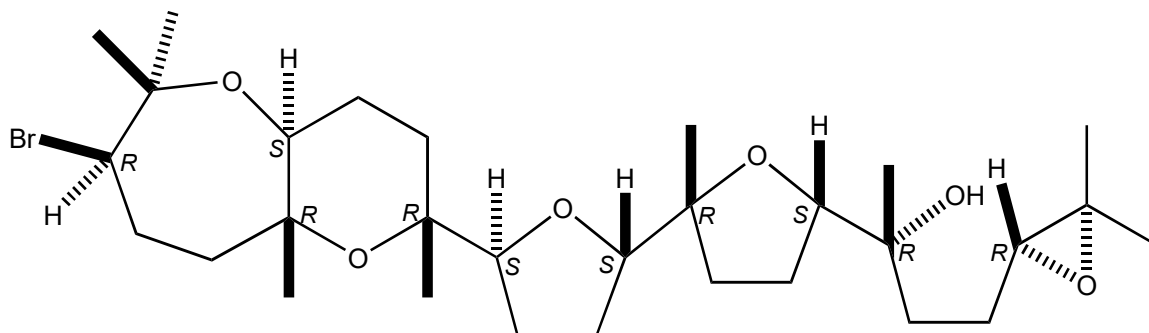
Origin: *Laurencia omaezakiana* (the coast of Shirahama, Wakayama Prefecture, Japan)<sup>(1)</sup>;

Formula: C<sub>30</sub>H<sub>51</sub>BrO<sub>6</sub>

Mol. Wt.: 587.63

Opt. Rot.: [α]<sub>D</sub><sup>22</sup> +11.1 (CHCl<sub>3</sub>)

Mp.: Oil



### References and Notes

(1) Miwa, T., Tsuruta, T., Nozue, C., Nakagawa, R., Fukuda, R., Nishikawa, K., Morimoto, Y., Kumagai, M., Nakamura, R., Hamada, T., Yamagishi, Y., and Kamada, T. 2025. *Tetrahedron*, **181**, 134686.

Enshuol epoxide, an unusual squalene-derived bromotriterpene from *Laurencia omaezakiana* and its biological evaluation. (IR, <sup>1</sup>H-NMR, <sup>13</sup>C-NMR)

(together with enshuol epoxide, enshuol, 15,16-anhydrothysiferol, *cis*-chondrin)