

4306 (C15 acetogenin)

Name: Japonenyne-A

{6-Bromo-2-(1-bromo-hex-3-en-5-ynylidene)-5-ethyl-hexahydro-furo[3,2-*b*]pyran}

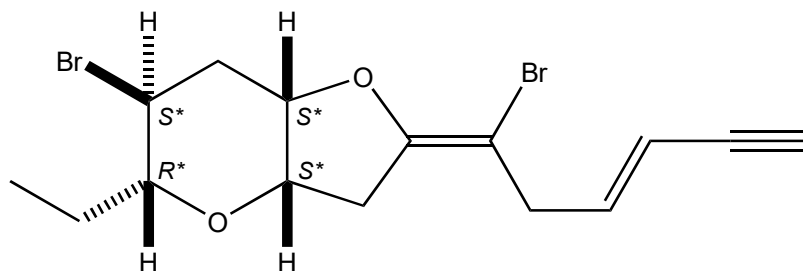
Origin: *Laurencia japonensis* (Chinzei, Saga; Toyooka, Hyogo; Heki, Yamaguchi, Japan)<sup>(1)</sup>;

Formula: C<sub>15</sub>H<sub>18</sub>Br<sub>2</sub>O<sub>2</sub>

Mol. Wt.: 390.11

Opt. Rot.: [α]<sub>D</sub><sup>21</sup> +40.2 (CH<sub>2</sub>Cl<sub>2</sub>)

Mp.: Oil



**References and Notes**

(1) Takahashi, Y., Suzuki, M., Abe, T., and Masuda, M. 1999. *Phytochemistry*, **50**, 799-803.

Japonenyne, halogenated C<sub>15</sub> acetogenins from *Laurencia japonensis*. (IR, <sup>1</sup>H-NMR, <sup>13</sup>C-NMR, MS) (together with japonenyne-A, japonenyne-B, japonenyne-C, etc.)