

4422 (C15 acetogenin)

Name: Bromofucin

{4,6-Dibromo-3-ethyl-9-pent-2-en-4-ynyl-
2,8-dioxa-bicyclo[5.2.1]decane}

Origin: *Laurencia implicata* (Florence Bay, Magnetic Island, Australia)⁽¹⁾;

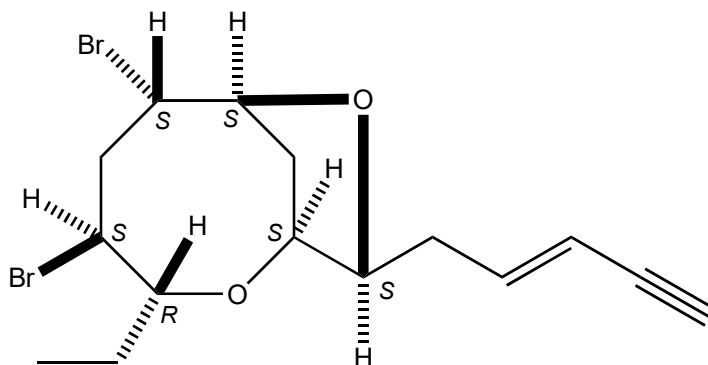
Laurencia pannosa (Phu Quoc Island, Kien Giang Province, Vietnam)⁽²⁾;

Formula: C₁₅H₂₀Br₂O₂

Mol. Wt.: 392.13

Opt. Rot.: [α]_D +1.7 (CHCl₃)

Mp.: 103-104.5



References and Notes

- (1) Coll, J. C. and Wright, A. D. 1989. *Aust. J. Chem.*, **42**, 1685-1693. Tropical marine algae. IV. Novel metabolites from the red alga *Laurencia implicata* (Rhodophyta, Rhodophyceae, Ceramiales, Rhodomelaceae). (UV, IR, ¹H-NMR, ¹³C-NMR)
- (2) Suzuki, M., Takahashi, Y., Matsuo, Y., and Masuda, M. 1996. *Phytochemistry*, **41**, 1101-1103. Pannosallene, a brominated C₁₅ nonterpenoid from *Laurencia pannosa*.
- (3) **Total synthesis**; Kim, B., Sohn, T., Kim, D., and Paton, R. S. 2018. *Chem. Eur. J.*, **24**, (11) 2634-2642. Asymmetric total syntheses and structure confirmation of chlorofucins and bromofucins.