

4432 (C15 acetogenin)

Name: *E*-Dihydrorhodophytin {8-(1-Bromo-propyl)-3-chloro-2-pent-2-en-4-ynyl-3,4,7,8-tetrahydro-2*H*-oxocine}

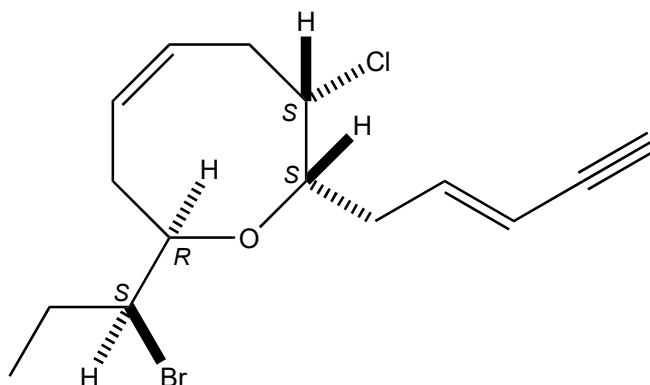
Origin: *Laurencia pinnatifida* (Callao Salvaje, Tenerife, Canary Islands, Spain)⁽¹⁾;
Laurencia pinnatifida (Tenerife, Canary Islands, Spain)⁽²⁾;

Formula: C₁₅H₂₀BrClO

Mol. Wt.: 331.68

Opt. Rot.: [α]_D +33.19⁽¹⁾; [α]_D²⁵ +33.2⁽²⁾

Mp.: 40-41⁽¹⁾; 40-41⁽²⁾



References and Notes

(1) Norte, M., Fernandez, J. J., Cataldo, F., and Gonzalez, A. G. 1989. *Phytochemistry*, **28**, 647-649. *E*-Dihydrorhodophytin, a C₁₅ acetogenin from the red alga *Laurencia pinnatifida*.

(UV, IR, ¹H-NMR, ¹³C-NMR, MS) (together with *E*-dihydrorhodophytin, *Z*-dihydrorhodophytin)

(2) Norte, M., Gonzalez, A. G., Cataldo, F., Rodriguez, M. L., and Brito, I. 1991. *Tetrahedron*, **47**, 9411-9418. New examples of acyclic and cyclic C-15 acetogenins from *Laurencia pinnatifida*.

Reassignment of the absolute configuration for *E* and *Z* pinnatifidiényne. (together with linear and cyclic acetogenins)