

4456 (C15 acetogenin)

Name: Epoxyrhodophytin      {3-(1-Bromo-propylidene)-6-chloro-5-pent-2-en-4-ynyl-4,9-dioxabicyclo[6.1.0]nonane}

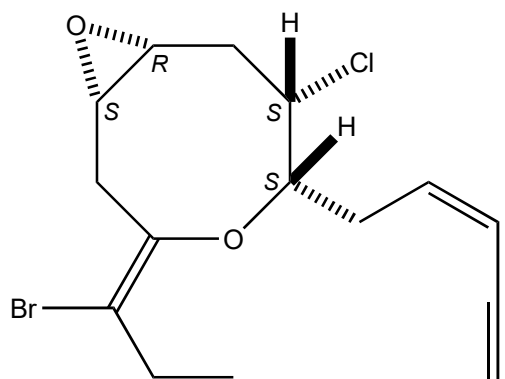
Origin: *Laurencia* sp. (Coyote Bay, Baja California, Mexico)<sup>(1)</sup>;

Formula: C<sub>15</sub>H<sub>18</sub>BrClO<sub>2</sub>

Mol. Wt.: 345.66

Opt. Rot.:

Mp.: 54-55



### References and Notes

(1) Howard, B. M., Fenical, W., Hirotsu, K., Solheim, B., and Clardy, J. 1980. *Tetrahedron*, **36**, 171-176. The rhodophytin and chondriol natural products; Structures of several new acetogenins from *Laurencia*, and a reassignment of structure for *cis*-rhodophytin.

(X-ray crystallographic analysis) (UV, IR, <sup>1</sup>H-NMR, <sup>13</sup>C-NMR) (epoxyrhodophytin)