

4611# (C15 acetogenin)

Name: Isomaneonene-C

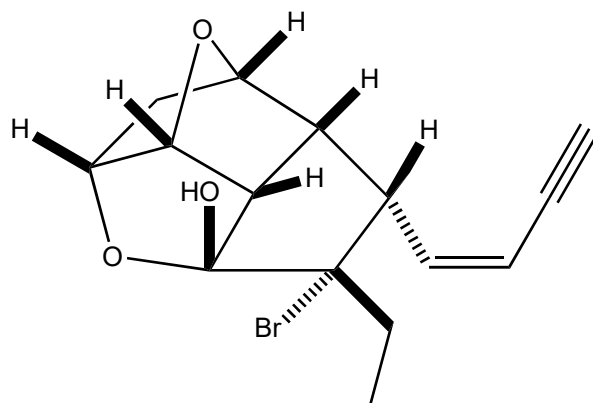
Origin: *Laurencia mariannensis* (Iheya Island, Okinawa Prefecture, Japan)⁽¹⁾;

Formula: C₁₅H₁₇BrO₃

Mol. Wt.: 325.20

Opt. Rot.: [α]_D²⁵ +91 (CHCl₃)

Mp.: Color oil



References and Notes

(1) Ishii, T., Tahara, A., Taba, K., Iwatsuki, M., Honsho, M., Asami, Y., Nonaka, K., Hanaki, H., and Teruya, T. 2023. *J. Asian Nat. Prod. Res.*, **25**, (7) 704-710. (DOI: <https://doi.org/10.1080/10286020.2022.2130266>). A new isomaneonene derivative from the red alga *Laurencia* cf. *mariannensis*. (IR, ¹H-NMR, ¹³C-NMR) (together with [isomaneonene-C](#), isomaneonene-B, *cis*-maneonene-D, α-snyderol)