

## 4715 (C15 acetogenin)

Name: Neonipponallene

{2-(1-Bromo-propyl)-7-(1-chloro-hex-3-en-5-ynyl)-  
2,3,6,7-tetrahydro-oxepine}

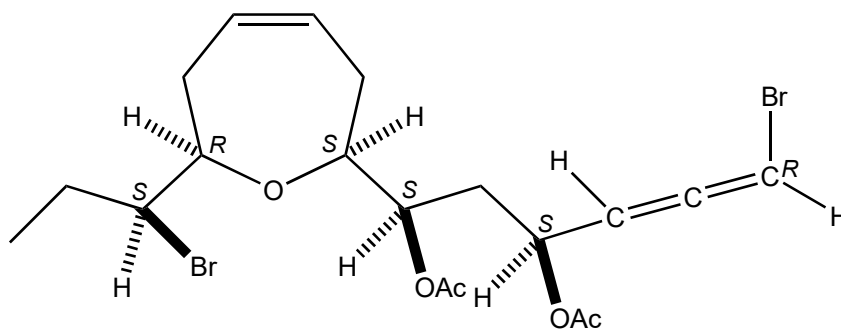
Origin: *Laurencia nipponica* (Troitsa Bay, the North-Western part of the Sea of Japan, Russia)<sup>(1)</sup>;

Formula: C<sub>19</sub>H<sub>26</sub>Br<sub>2</sub>O<sub>5</sub>

Mol. Wt.: 494.21

Opt. Rot.: [α]<sub>D</sub><sup>22</sup> -203 (EtOH)

Mp.: 47-49



### References and Notes

(1) Lyakhova, E. G., Kalinovsky, A. I., Dmitrenok, A. S., Kolesnikova, S. A., Fedorov, S. N., Vaskovsky, V. E., and Stonik, V. A. 2006. *Tetrahedron Lett.*, **47**, 6549-6552. Structures and absolute stereochemistry of nipponallene and neonipponallene, new brominated allenes from the red alga *Laurencia nipponica*. (<sup>1</sup>H-NMR, <sup>13</sup>C-NMR, MS) (together with nipponallene and neonipponallene)