

4720 (C15 acetogenin)

Name: Epilaurallene = Laurallene

{2-(3-Bromo-propa-1,2-dienyl)-5-(1-bromo-propyl)-
3,3a,5,6,9,9a-hexahydro-2*H*-furo[3,2-*b*]oxocine}

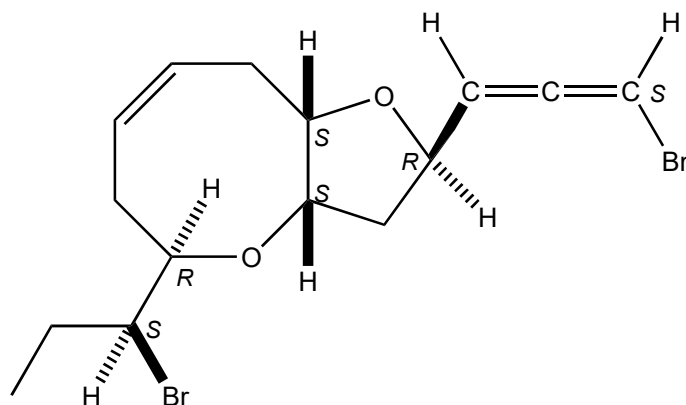
Origin: *Laurencia nipponica* (Tsukotan, near Oshoro Bay, Hokkaido, Japan)⁽¹⁾;

Formula: C₁₅H₂₀Br₂O₂

Mol. Wt.: 392.13

Opt. Rot.: [α]_D²⁵ +173.6 (CHCl₃)

Mp.: 53-54



References and Notes

- (1) Suzuki, M., Koizumi, K., Kikuchi, H., Suzuki, T., and Kurosawa, E. 1983. Bull. Chem. Soc. Jpn., **56**, 715-718. Epilaurallene, a new nonterpenoid C₁₅-bromoallene from the red alga *Laurencia nipponica* Yamada. (IR, ¹H-NMR, ¹³C-NMR, MS)
- (2) Epilaurallene may be a polymorph of laurallene; Suzuki, M., Takahashi, Y., Matsuo, Y., and Masuda, M. 1996. Phytochemistry, **41**, 1101-1103. Pannosallene, a brominated C₁₅ nonterpenoid from *Laurencia pannosa*.