

4722 (C15 acetogenin)

Name: Nipponallene

{2-(3-Bromo-propa-1,2-dienyl)-5-(1-bromo-propyl)-
3,3a,5,6,9,9a-hexahydro-2*H*-furo[3,2-*b*]oxocine}

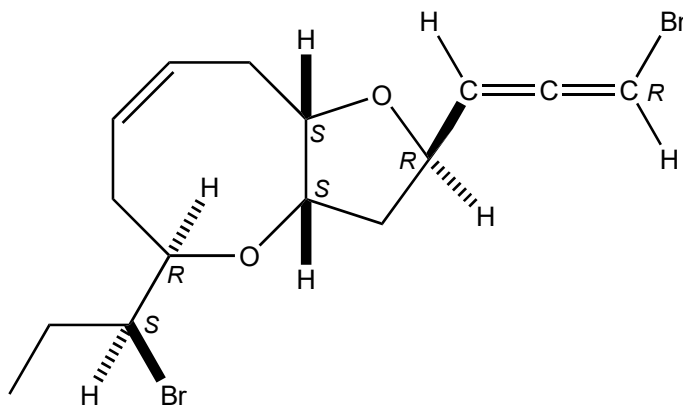
Origin: *Laurencia nipponica* (Troitsa Bay, the North-Western part of the Sea of Japan, Russia)⁽¹⁾;

Formula: C₁₅H₂₀Br₂O₂

Mol. Wt.: 392.13

Opt. Rot.: [α]_D²² -144 (EtOH)

Mp.: 47-49



References and Notes

(1) Lyakhova, E. G., Kalinovsky, A. I., Dmitrenok, A. S., Kolesnikova, S. A., Fedorov, S. N., Vaskovsky, V. E., and Stonik, V. A. 2006. *Tetrahedron Lett.*, **47**, 6549-6552. Structures and absolute stereochemistry of nipponallene and neonipponallene, new brominated allenes from the red alga *Laurencia nipponica*. (IR, ¹H-NMR, ¹³C-NMR, MS) (together with [nipponallene](#), neonipponallene)