

4736# (C15 acetogenin)

Name: Katsuurallene

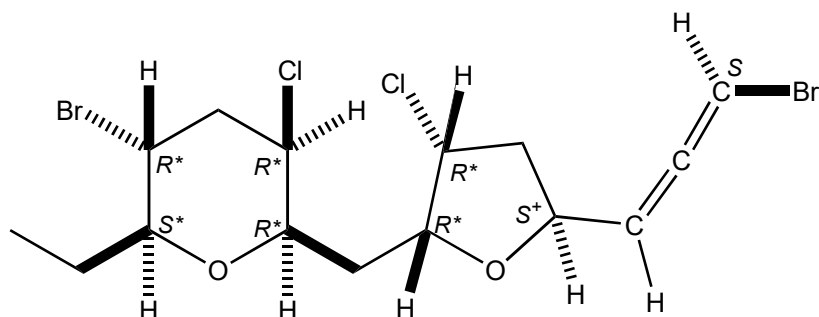
Origin: *Laurencia saitoi* (the coast of Yoshio, Katsuura, Chiba Prefecture, Japan)⁽¹⁾;

Formula: C₁₅H₂₀Br₂Cl₂O₂

Mol. Wt.: 463.03

Opt. Rot.: [α]_D²⁸ +73.5 (CHCl₃)

Mp.: Oil



References and Notes

(1) Minamida, Y., Matsuura, H., Ishii, T., Miyagi, M., Shinjo, Y., Sato, K., Kamada, T., Mihara, Y., Togashi, I., Sugimoto, K., Abe, T., Kikuchi, N., and Suzuki, M. 2022. *Nat. Prod. Bioprospecting*, **12**, (1) 10 (<https://doi.org/10.1007/s13659-022-00328-1>); **Correction**: .

New acetogenin katsuurallene from *Laurencia saitoi* collected from Katsuura, Japan.

(**IR**, **¹H-NMR**, **¹³C-NMR**) (together with [katsuurallene](#), [thysiferol](#), [deoxyparguerol](#))