

## 4741 (C15 acetogenin)

Name: Panacene

{2-(3-Bromo-propa-1,2-dienyl)-4-ethyl-1,2,3a,8a-tetrahydro-3,8-dioxo-cyclopenta[a]indene}

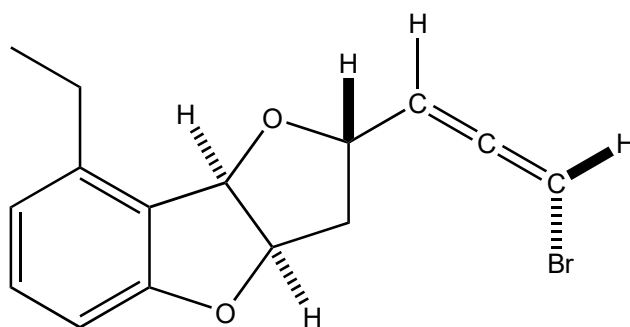
Origin: *Aplysia brasiliana* (Panacea, Florida, USA)<sup>(1)</sup>;

Formula: C<sub>15</sub>H<sub>15</sub>BrO<sub>2</sub>

Mol. Wt.: 307.18

Opt. Rot.: [α]<sub>D</sub><sup>21</sup> +382

Mp.: Oil



### References and Notes

(1) Kinnel, R., Duggan, A. J., Eisner, T., and Meinwald, J. 1977. *Tetrahedron Lett.*, **18**, 3913-3916. Panacene: an aromatic bromoallene from a sea hare (*Aplysia brasiliana*).

(UV, IR, <sup>1</sup>H-NMR, <sup>13</sup>C-NMR)

(2) **Total synthesis and absolute configuration**; (a) Boukouvalas, J., Pouliot, M., Robichaud, J., MacNeil, S., and Snieckus, V. 2006. *Org. Lett.*, **8**, 3597-3599. Asymmetric total synthesis of (-)-panacene and correction of its relative configuration.; (b) Feldman, K. S. 1982. *Tetrahedron Lett.* **23**, 3031-3034. Biomimetic synthesis of (*dl*)-panacene.; (c) Feldman, K. S., Mechem, C. C., and Nader, L. 1982. *J. Am. Chem. Soc.*, **104**, 4011-4012. Total syn thesis of (*dl*)-panacene.