

**4803#** (C15 acetogenin)

Name: 4-*epi*-Itomanallene A {6-Bromo-2-(3-bromo-propa-1,2-dienyl)-5-ethyl-2,3,3a,5,6,7,10,10a-octahydro-furo[3,2-*b*]oxonine}

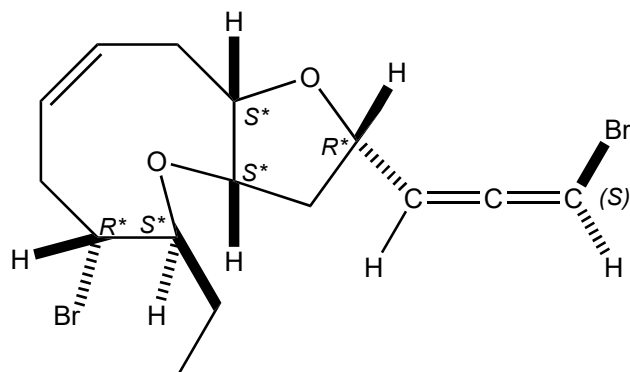
Origin: *Laurencia nangii* (Carrington Reef, Sabah, Malaysia)<sup>(1)</sup>;

Formula: C<sub>15</sub>H<sub>20</sub>Br<sub>2</sub>O<sub>2</sub>

Mol. Wt.: 392.13

Opt. Rot.: [α]<sub>D</sub><sup>25</sup> +73.9 (CHCl<sub>3</sub>)

Mp.: Oil



**References and Notes**

(1) Phan, C.-S., Kamada, T., and Vairappan, C. S. 2020. Nat. Prod. Res., **34**, 1008-1013. Two new epimers of C<sub>15</sub>-acetogenin, 4-*epi*-isolaurallene and 4-*epi*-itomanallene A as diastereomeric model. (IR, <sup>1</sup>H-NMR, <sup>13</sup>C-NMR) (together with 4-*epi*-isolaurallene and 4-*epi*-itomanallene A)