

4818 (C15 acetogenin)

Name: Kasallene

{10-(3-Bromo-propa-1,2-dienyl)-12-methyl-
11,13-dioxo-bicyclo[7.3.1]tridec-7-ene-2,4,5-triol}

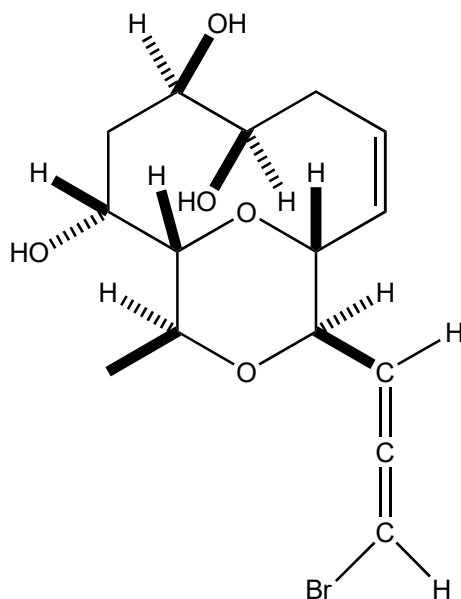
Origin: *Laurencia obtusa* (Kas, near Antalya, Mediterranean Sea, Turkey)⁽¹⁾;

Formula: C₁₅H₂₁BrO₅

Mol. Wt.: 361.23

Opt. Rot.: [α]_D²⁵ -200 (CHCl₃)

Mp.: 206-208



References and Notes

- (1) Öztunc, A., Imre, S., Wagner, H., Norte, M., Fernandez, J. J., and Gonzalez, R. 1991. *Tetrahedron Lett.*, **32**, 4377-4380. A new and highly oxygenated bromoallene from a marine source. (IR, ¹H-NMR, ¹³C-NMR)