

## 5101 (Indole)

Name: *N*-Methyl-2,5-dibromoindole; 1-Methyl-2,5-dibromoindole

{2,5-Dibromo-1-methyl-1*H*-indole}

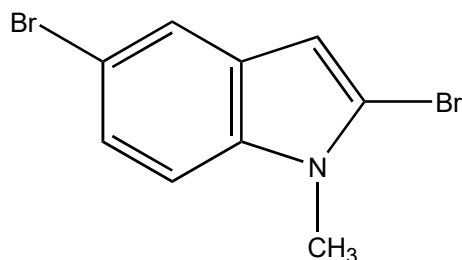
Origin: *Laurencia similis* (the coast of Hainan Islands, China)<sup>(1)</sup>;

Formula: C<sub>9</sub>H<sub>7</sub>Br<sub>2</sub>N

Mol. Wt.: 288.97

Opt. Rot.:

Mp.: Colorless powder



### References and Notes

(1) Li, C.-S., Li, X.-M., Cui, C.-M., and Wang, B. G. 2010. *Z. Naturforsch.*, **65b**, 87-89. Brominated metabolites from the marine red alga *Laurencia similis*. (UV, IR, <sup>1</sup>H-NMR, <sup>13</sup>C-NMR) (together with [1-methyl-2,5-dibromoindole](#), aristolan-1-bromo-9,10-epoxide, six known compounds)