

5102 (Indole)

Name: *N*-Methyl-3,5-dibromoindole; 1-Methyl-3,5-dibromoindole

{3,5-Dibromo-1-methyl-1*H*-indole}

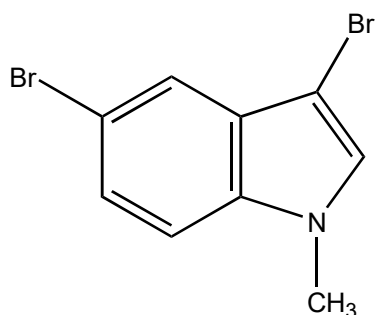
Origin: *Laurencia similis* (Sanya Bay, Hainan Province, China)⁽¹⁾;

Formula: C₉H₇Br₂N

Mol. Wt.: 288.97

Opt. Rot.:

Mp.: Colorless crystal



References and Notes

(1) Su, H., Yuan, Z. H., Li, J., Guo, S. J., Deng, L. P., Han, L. J., Zhu, X. B., and Shi, D. Y. 2009. *Chin. Chem. Lett.*, **20**, 456-458. Two new bromoindoles from red alga *Laurencia similis*.

(¹H-NMR, ¹³C-NMR) (together with 1-methyl-3,5-dibromoindole (inseparable mixture with [1-methyl-3,5-dibromoindole](#)), 1-methyl-3,5,6-tribromoindole, 2,2',5,5',6,6'-sixbromo-3,3'-bi-1*H*-indole)