

## 5105 (Indole)

Name: *N*-Methyl-3,5,6-tribromoindole; 1-Methyl-3,5,6-tribromoindole

{3,5,6-Tribromo-1-methyl-1*H*-indole}

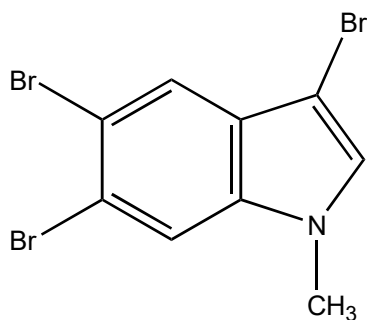
Origin: *Laurencia similis* (the coast of Sanya, Hainan Island, China)<sup>(1)</sup>;

Formula: C<sub>9</sub>H<sub>6</sub>Br<sub>3</sub>N

Mol. Wt.: 367.86

Opt. Rot.:

Mp.: Crystals



### References and Notes

(1) Ji, N.-Y., Li, X.-M., Ding, L.-P., and Wang, B. G. 2007. *Helv. Chim. Acta*, **90**, 385-391. Aristolane sesquiterpenes and highly brominated indoles from the marine red alga *Laurencia similis* (Rhodomelaceae) (<sup>1</sup>H-NMR, <sup>13</sup>C-NMR) (together with 1-methyl-3,5,6-tribromoindole, 3,5,6-tribromoindole, 2,3,6-tribromoindole, aristolane sesquiterpenes, elatol)