

5107 (Indole)

Name: *N*-Methyl-2,3,4,6-tetrabromoindole; 1-Methyl-2,3,4,6-tetrabromoindole

{2,3,4,6-Tetrabromo-1-methyl-1*H*-indole}

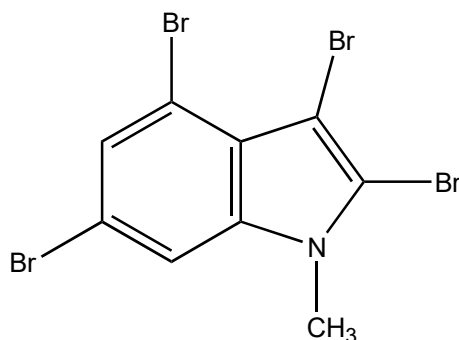
Origin: *Laurencia decumbens* (South China Sea waters offshore Weizhou Islands, China)⁽¹⁾;

Formula: C₉H₅Br₄N

Mol. Wt.: 446.76

Opt. Rot.:

Mp.: Crystals



References and Notes

(1) Ji, N.-Y., Li, X.-M., Cui, C.-M., and Wang, B.-G. 2007. *Helv. Chim. Acta*, **90**, 1731-1736. Terpenes and polybromoindoles from the marine red alga *Laurencia decumbens* (Rhodomelaceae).

(IR, ¹H-NMR, ¹³C-NMR, MS) (together with laurendecumtriol, 11-*O*-deacetylpinnaterpenes C, pinnaterpene C, obtusane, elatol, 1(10)-aristolene, [1-methyl-2,3,4,6-tetrabromoindole](#), 1-methyl-2,3,5,6-tetrabromoindole, 1-methyl-2,3,5-tetrabromoindole)