

## 5108 (Indole)

Name: 3,5,6-Tribromoindole

{3,5,6-Tribromo-1*H*-indole}

Origin: *Laurencia similis* (the coast of Sanya, Hainan Island, China)<sup>(1)</sup>;

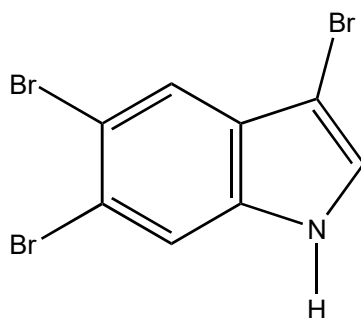
*Laurencia similis* (the coast of Hainan Islands, China)<sup>(2)</sup>;

Formula: C<sub>6</sub>H<sub>4</sub>Br<sub>3</sub>N

Mol. Wt.: 353.84

Opt. Rot.:

Mp.: Crystals



### References and Notes

(1) Ji, N.-Y., Li, X.-M., Ding, L.-P., and Wang, B. G. 2007. *Helv. Chim. Acta*, **90**, 385-391. Aristolane sesquiterpenes and highly brominated indoles from the marine red alga *Laurencia similis* (Rhodomelaceae) (<sup>1</sup>H-NMR, <sup>13</sup>C-NMR) (together with 1-methyl-3,5,6-tribromoindole, 3,5,6-tribromoindole, 2,3,6-tribromoindole, aristolane sesquiterpenes, elatol)

(2) Li, C.-S., Li, X.-M., Cui, C.-M., and Wang, B. G. 2010. *Z. Naturforsch.*, **65b**, 87-89. Brominated metabolites from the marine red alga *Laurencia similis*. (together with 1-methyl-2,5-dibromoindole, 3,5,6-tribromoindole, aristolan-1-bromo-9,10-epoxide, six known compounds)