

5109 (Indole)

Name: 2,3,6-Tribromoindole

{2,3,6-Tribromo-1*H*-indole}

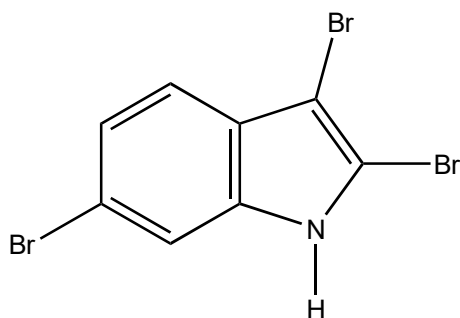
Origin: *Laurencia similis* (the coast of Sanya, Hainan Island, China)⁽¹⁾;

Formula: C₆H₄Br₃N

Mol. Wt.: 353.84

Opt. Rot.:

Mp.: Crystals



References and Notes

(1) Ji, N.-Y., Li, X.-M., Ding, L.-P., and Wang, B. G. 2007. *Helv. Chim. Acta*, **90**, 385-391. Aristolane sesquiterpenes and highly brominated indoles from the marine red alga *Laurencia similis* (Rhodomelaceae) (¹H-NMR, ¹³C-NMR) (together with 1-methyl-3,5,6-tribromoindole, 3,5,6-tribromoindole, [2,3,6-tribromoindole](#), aristolane sesquiterpenes, elatol)