

5115 (Indole)

Name: 2,2',5,5',6,6'-Hexabromo-3,3'-bi-1*H*-indole

{2,5,6,2',5',6'-Hexabromo-1*H*,1'*H*-[3,3']biindolyl}

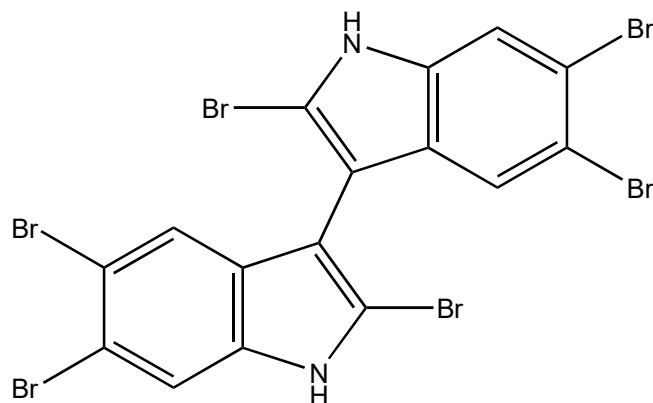
Origin: *Laurencia similis* (Sanya Bay, Hainan Province, China)⁽¹⁾;

Formula: C₁₆H₆Br₆N₂

Mol. Wt.: 705.66

Opt. Rot.:

Mp.: Amorphous powder



References and Notes

(1) Su, H., Yuan, Z. H., Li, J., Guo, S. J., Deng, L. P., Han, L. J., Zhu, X. B., and Shi, D. Y. 2009. *Chin. Chem. Lett.*, **20**, 456-458. Two new bromoindoles from red alga *Laurencia similis*.

(¹H-NMR, ¹³C-NMR) (together with 1-methyl-3,5-dibromoindole (inseparable mixture with 1-methyl-3,5,6-tribromoindole), [2,2',5,5',6,6'-hexabromo-3,3'-bi-1*H*-indole](#))