

5117 (Indole)

Name: Similisine B

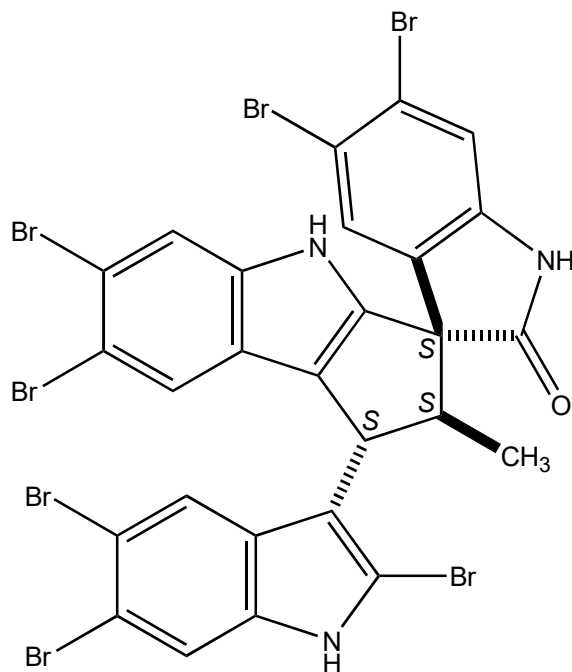
Origin: *Laurencia similis* (South China Sea, China)⁽¹⁾;

Formula: C₂₇H₁₄Br₇N₃O

Mol. Wt.: 955.75

Opt. Rot.: [α]_D²⁰ -10.3 (MeOH)

Mp.: White powder



References and Notes

- (1) Sun, W.-S., Su, S., Zhu, R.-X., Tu, G.-Z., Cheng, W., Liang, H., Guo, X.-Y., Zhao, Y.-Y., and Zhang, Q.-Y. 2013. *Tetrahedron Lett.*, **54**, 3617-43620. A pair of unprecedented spiro-trisindole enantiomers fused through a five-membered ring from *Laurencia similis*. (UV, ¹H-NMR, ¹³C-NMR) (together with similisine A, [similisine B](#), seven known simple and bis-indole alkaloids)