

## 5118 (Indole)

Name: 2,5,6-Tribromo-3-[(3'-bromo-4'-hydroxyphenyl)methyl]-1*H*-indole

{2-Bromo-4-(2,5,6-tribromo-1*H*-indol-3-ylmethyl)-phenol}

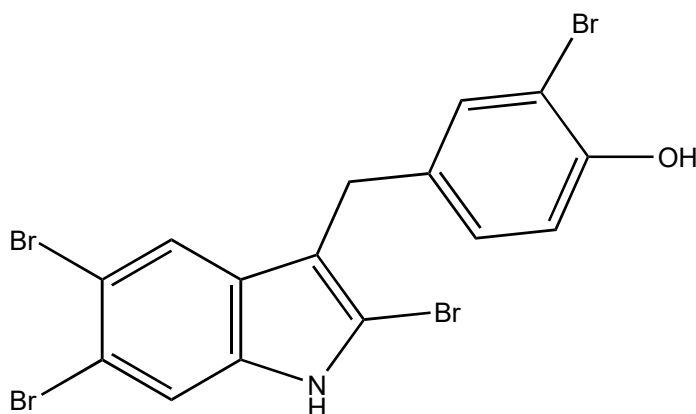
Origin: *Laurencia similis* (South China Sea, China)<sup>(1)</sup>;

Formula: C<sub>15</sub>H<sub>9</sub>Br<sub>4</sub>NO

Mol. Wt.: 538.85

Opt. Rot.:

Mp.: Yellow oil



### References and Notes

(1) Li, M.-C., Sun, W.-S., Cheng, W., Liu, D., Liang, H., Zhang, Q.-Y., and Lin, W.-H. 2016. *Bioorg. Med. Chem. Lett.*, **26**, 3590-3593. (doi: 10.1016/j.bmcl.2016.06.015)

Four new minor brominated indole related alkaloids with antibacterial activity from *Laurencia similis*. (<sup>1</sup>H-NMR, <sup>13</sup>C-NMR) (together with four brominated indole related alkaloids)