

5202 (Indole)

Name: Itomaindole B; 4,6-Dibromo-2-methylthio-3-(methylsulfinyl)indole

{4,6-Dibromo-3-methanesulfinyl-2-methylsulfanyl-1*H*-indole}

Origin: *Laurencia brongniartii* (Komesu, Itoman, Okinawa Prefecture, Japan)^(1,2);

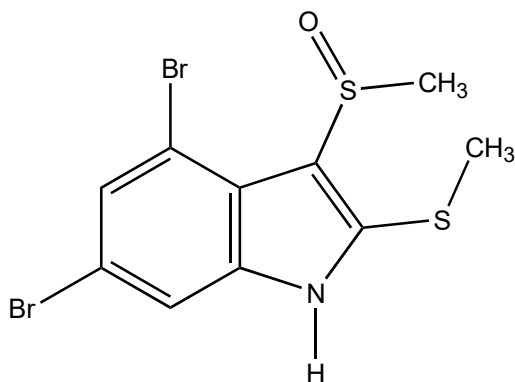
Laurencia brongniartii (the coast of Kenting, south tip of Taiwan, China)⁽³⁾;

Formula: C₁₀H₉Br₂NOS₂

Mol. Wt.: 383.12

Opt. Rot.: [α]_D²⁵ -38 (CHCl₃)

Mp.: 104-106



References and Notes

- (1) Tanaka, J., Higa, T., Bernardinelli, G., and Jefford, C. W. 1988. *Tetrahedron*, **29**, 6091-6094. Itomaindoles A and B, methylsulfinylindoles from *Laurencia brongniartii*. (UV, IR, ¹H-NMR, ¹³C-NMR, MS) (together with itomaindole A, [itomaindole B](#), known 4,6-dibromo-2,3-(dimethylthio)indole)
- (2) Tanaka, J., Higa, T., Bernardinelli, G., and Jefford, C. W. 1989. *Tetrahedron*, **45**, 7301-7310. Sulfur-containing polybromoindoles from the red alga *Laurencia brongniartii*. (UV, IR, ¹H-NMR, ¹³C-NMR, MS) (together with 2,4,6-tribromoindole, 2,3,4,6-tetrabromoindole, 4 sulfur-containing bromoindoles)
- (3) Fang, H.-Y, Chiou, S.-F., Uvarani, C., Wen, Z.-H., Hsu, C.-H., Wu, Y.-C., Wang, W.-L., Liaw, C.-C., and Sheu, J. H. 2014. *Bull. Chem. Soc. Jpn.*, **68**, 1278-1280. Cytotoxic, anti-inflammatory, and antibacterial sulfur-containing polybromoindoles from the Formosan red alga *Laurencia brongniartii*. (together with 4,5,6-tribromo-2-methylsulfinylindole, 11 known sulfur-containing bromoindoles)