

5203 (Indole)

Name: 4,6-Dibromo-2-methylthioindole; 4,6-Dibromo-2-(methylthio)indole⁽¹⁾
{4,6-Dibromo-2-methylsulfanyl-1*H*-indole}

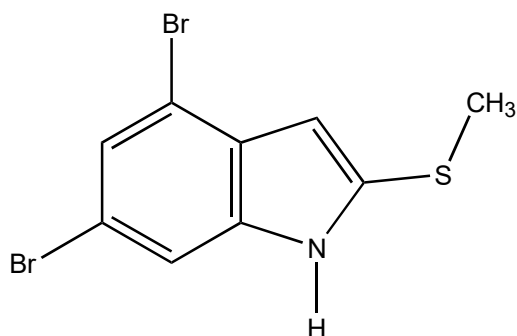
Origin: *Laurencia brongniartii* (Komesu, Itoman, Okinawa Prefecture, Japan)⁽¹⁾;
Laurencia brongniartii (Ken-Ting National Park, south tip of Taiwan, China)⁽²⁾;

Formula: C₉H₇Br₂NS

Mol. Wt.: 321.03

Opt. Rot.:

Mp.: 59-61



References and Notes

- (1) Tanaka, J., Higa, T., Bernardinelli, G., and Jefford, C. W. 1989. *Tetrahedron*, **45**, 7301-7310. Sulfur-containing polybromoindoles from the red alga *Laurencia brongniartii*. (**IR**, **¹H-NMR**, **MS**) (together with 2,4,6-tribromoindole, 2,3,4,6-tetrabromoindole, 4 sulfur-containing bromoindoles)
- (2) El-Gamel, A. A., Wang, W.-L., and Duh, C. Y. 2005. *J. Nat. Prod.*, **68**, 815-817. Sulfur-containing polybromoindoles from the Formosan red alga *Laurencia brongniartii*. (**UV**, **IR**, **¹H-NMR**, **¹³C-NMR,MS**) (together with 5 new and 7 known sulfur-containing bromoindoles)