

5210 (Indole)

Name: 4,6-Dibromo-2,3-bis(methylsulfinyl)indole⁽²⁾; 4,6-Dibromo-2,3-di(methylsulfinyl)indole⁽¹⁾
{4,6-Dibromo-2,3-bis-methanesulfinyl-1*H*-indole}

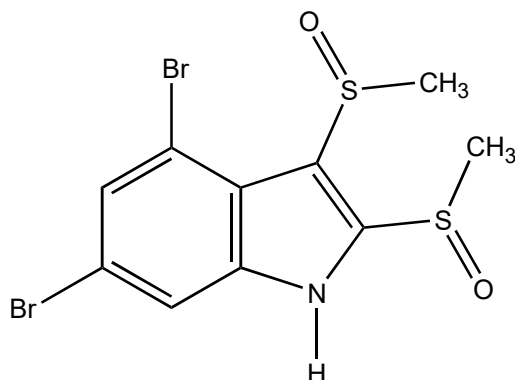
Origin: *Laurencia brongniartii* (Ken-Ting National Park, south tip of Taiwan, China)⁽¹⁾;
Laurencia brongniartii (the coast of Kenting, south tip of Taiwan, China)⁽²⁾;

Formula: C₁₀H₉Br₂NO₂S₂

Mol. Wt.: 399.12

Opt. Rot.:

Mp.: 132-134



References and Notes

- (1) EI-Gamel, A. A., Wang, W.-L., and Duh, C. Y. 2005. *J. Nat. Prod.*, **68**, 815-817. Sulfur-containing polybromoindoles from the Formosan red alga *Laurencia brongniartii*. (UV, IR, ¹H-NMR, ¹³C-NMR, MS) (together with 5 new and 7 known sulfur-containing bromoindoles)
- (2) Fang, H.-Y., Chiou, S.-F., Uvarani, C., Wen, Z.-H., Hsu, C.-H., Wu, Y.-C., Wang, W.-L., Liaw, C.-C., and Sheu, J. H. 2014. *Bull. Chem. Soc. Jpn.*, **68**, 1278-1280. Cytotoxic, anti-inflammatory, and antibacterial sulfur-containing polybromoindoles from the Formosan red alga *Laurencia brongniartii*. (together with 4,5,6-tribromo-2-methylsulfinylindole, 11 known sulfur-containing bromoindoles)