

5213 (Indole)

Name: 3,3'-Bis(2'-methylsulfinyl-2-methylthio-4,6,4',6'-tetrabromo)indole

{4,6,4',6'-Tetrabromo-2'-methanesulfinyl-2-methylsulfanyl-1*H*,1'*H*-[3,3']biindolyl}

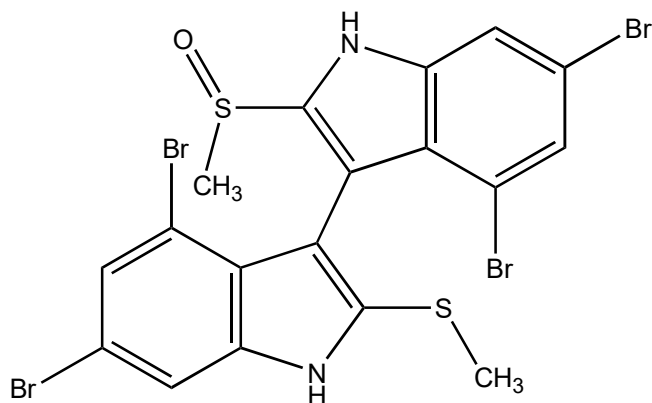
Origin: *Laurencia brongniartii* (Ken-Ting National Park, south tip of Taiwan, China)⁽¹⁾;

Formula: C₁₈H₁₂Br₄N₂OS₂

Mol. Wt.: 656.05

Opt. Rot.: [α]_D²⁵ +36 (CHCl₃)

Mp.: 187-189



References and Notes

(1) EI-Gamel, A. A., Wang, W.-L., and Duh, C. Y. 2005. *J. Nat. Prod.*, **68**, 815-817. Sulfur-containing polybromoindoles from the Formosan red alga *Laurencia brongniartii*. (UV, IR, ¹H-NMR, ¹³C-NMR, MS) (together with 5 new and 7 known sulfur-containing bromoindoles)