

5214 (Indole)

Name: 3,3-Bis(4,6-dibromo-2-methylsulfinyl)indole

{4,6,4',6'-Tetrabromo-2,2'-bis-methanesulfinyl-1*H*,1'*H*-[3,3']biindolyl}

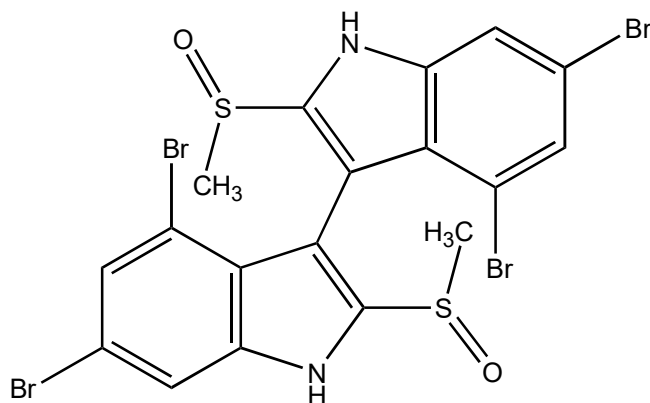
Origin: *Laurencia brongniartii* (Ken-Ting National Park, south tip of Taiwan, China)⁽¹⁾;

Formula: C₁₈H₁₂Br₄N₂O₂S₂

Mol. Wt.: 672.05

Opt. Rot.: [α]_D²⁵ 0 (CHCl₃)

Mp.: 191-193



References and Notes

(1) EI-Gamel, A. A., Wang, W.-L., and Duh, C. Y. 2005. *J. Nat. Prod.*, **68**, 815-817. Sulfur-containing polybromoindoles from the Formosan red alga *Laurencia brongniartii*. (UV, IR, ¹H-NMR, ¹³C-NMR, MS) (together with 5 new and 7 known sulfur-containing bromoindoles)